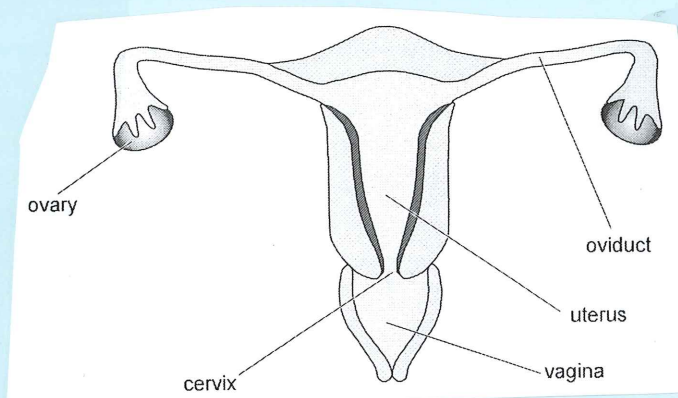


B2.3 Reproduction, Fertility & Contraception ~ HLW Answers



(A)

1 (a)

Part of female reproductive system	Function
ovary [1]	produces eggs (ova)
uterus [1]	where the baby develops
oviduct [1]	where fertilisation takes place

[3]

(b) (i) Condom – barrier to prevent sperm entering the female [1]
 Contraceptive pill – changes a woman's hormone levels and stops eggs being released [1]

[2]

(ii) Against their religion

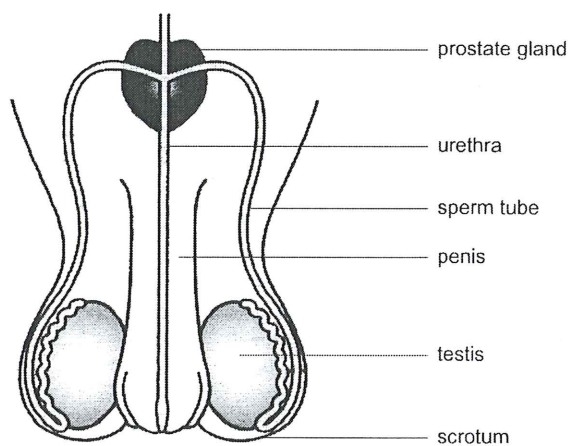
[1]

AVAILABLE MARKS

6

2 The diagram below shows the male reproductive system.

(B)



[6]

© GCSE Science Single Award for CCEA Foundation and Higher Tier by James Napier, Alyn McFarland and Roy White. Published by Hodder Education, 2013. ISBN: 9781444195729. Reproduced by permission of Hodder Education.

(a) Complete the table below about the male reproductive system.

Name of part	Function
	carries sperm to the penis
	makes sperm

[2]

1	(a) (i)	A – tail;	C	[1]	AVAILABLE MARKS
		B – cell membrane;		[1]	
	(ii)	Enable sperm to swim (to egg);	[1]		
	(b)	oviduct;	[1]		
(c)	zygote;	[1]	5		

6	(a)	Nucleus; [1] Accept: Head;	D	[2]	AVAILABLE MARKS
		Tail; [1]			
	(b) (i)	Sperm [head] entering/touching egg;		[1]	
		Accept: Described, e.g. Sperm attached to egg;			
	(ii)	nucleus/nuclei; [1]		[2]	
		of sperm and egg fuse; [1]			
(c)	Oviduct;		[1]		
(d)	Zygote;		[1]		
(e)	Any two from: Divide/by mitosis; form a ball of cells/embryo; Travels down oviduct;		[2]	9	

6	(a) (i)	F in either oviduct;	E	[1]	AVAILABLE MARKS	
		(ii)		M in uterus		[1]
		(iii)		Produce ova (eggs)/oestrogen		[1]
	(b) (i)	A – Placenta;		[1]		
		B – Umbilical cord;		[1]		
		C – Amniotic sac/fluid/amnion;		[1]		
(ii)	Small size of foetus/not fully grown; Limbs/head not fully formed; (Accept: reference to any organ not fully developed)		[2]	8		

13	(a) (i)	Amniotic fluid;	F	[1]	AVAILABLE MARKS
		(ii)		Cushions the foetus;	
	(b) (i)	Large surface area/villi; good blood supply; thin membrane		[1]	
		(ii)		Carbon dioxide/nitrogen wastes;	

6	(a) Hormone;	G	[1]	5
	(b) Ovary;		[1]	
	(c) Testosterone;		[1]	
	(d) (i) Body more muscular/voice deepens/enlargement of penis;		[1]	
	(ii) Pelvis and hips widen/breasts develop/menstruation;		[1]	

3	(a) testes;	H	[1]	5
	(b) (i) low level during childhood; increases during puberty; levels off at adulthood;		[3]	
	(ii) body more muscular/growth of pubic/facial hair/produce sperm/ voice deepens/development of testes;		[1]	

1	(a) (i) Days 1–5 shaded;	I	[1]	4
	(ii) Lining of uterus breaks down (and passes out through vagina);		[1]	
	(b) Eggs released (/ovulation) on day 14; fertilisation can occur/sperm can still be alive on day 14;		[2]	

10	(a) (i) Oviducts are cut; prevents ova from moving through to be fertilised;	J	[2]	6
	(ii) Permanent/can't be reversed/very difficult to reverse;		[1]	
	(b) (i) Barrier; Stops sperm (entering vagina);		[2]	
	(ii) Helps prevent STIs;		[1]	

14 Indicative Content

(K)

AVAILABLE MARKS

1. Chemical;
2. Less chance of pregnancy than mechanical type;
3. More chance of pregnancy than surgical types;
- 4 and 5. **Maximum of two** from:
 - Convenient;
 - Reversible;
 - Does not interrupt sexual intercourse;
 - Less risk than surgery;
 - Reduces bleeding;
6. **One** from:
 - May increase risk of blood clotting/may cause headaches/may cause tender breasts;

Accept: bullet points which start with capital letter, contain a verb and end in full stop as sentences.

Band	Response	Mark
A	Candidates must use appropriate, specialist terms throughout using five of the above points . They use good spelling, punctuation and grammar and the form and style are of a high standard .	[5]–[6]
B	Candidates use some appropriate, specialist terms throughout using three of the above points . They use satisfactory spelling, punctuation and grammar and the form and style are of a satisfactory standard .	[3]–[4]
C	Candidates make little use of specialist terms throughout using some or all of the above points . The spelling, punctuation and grammar, form and style are of a limited standard .	[1]–[2]
D	Response not worthy of credit.	[0]

[6]

6

- 4 (a) Accurate plots; [2]
 Line drawn; [1]
- (b) 4–8; [1]
- (c) (i) Growth rate **increases**; [1]
 (ii) Puberty/hormones; [1]

(L)

6